



The Norwegian Center for
Child Behavioral Development

10.12.21



Multi-professional work in Norwegian schools in relation to conduct problems



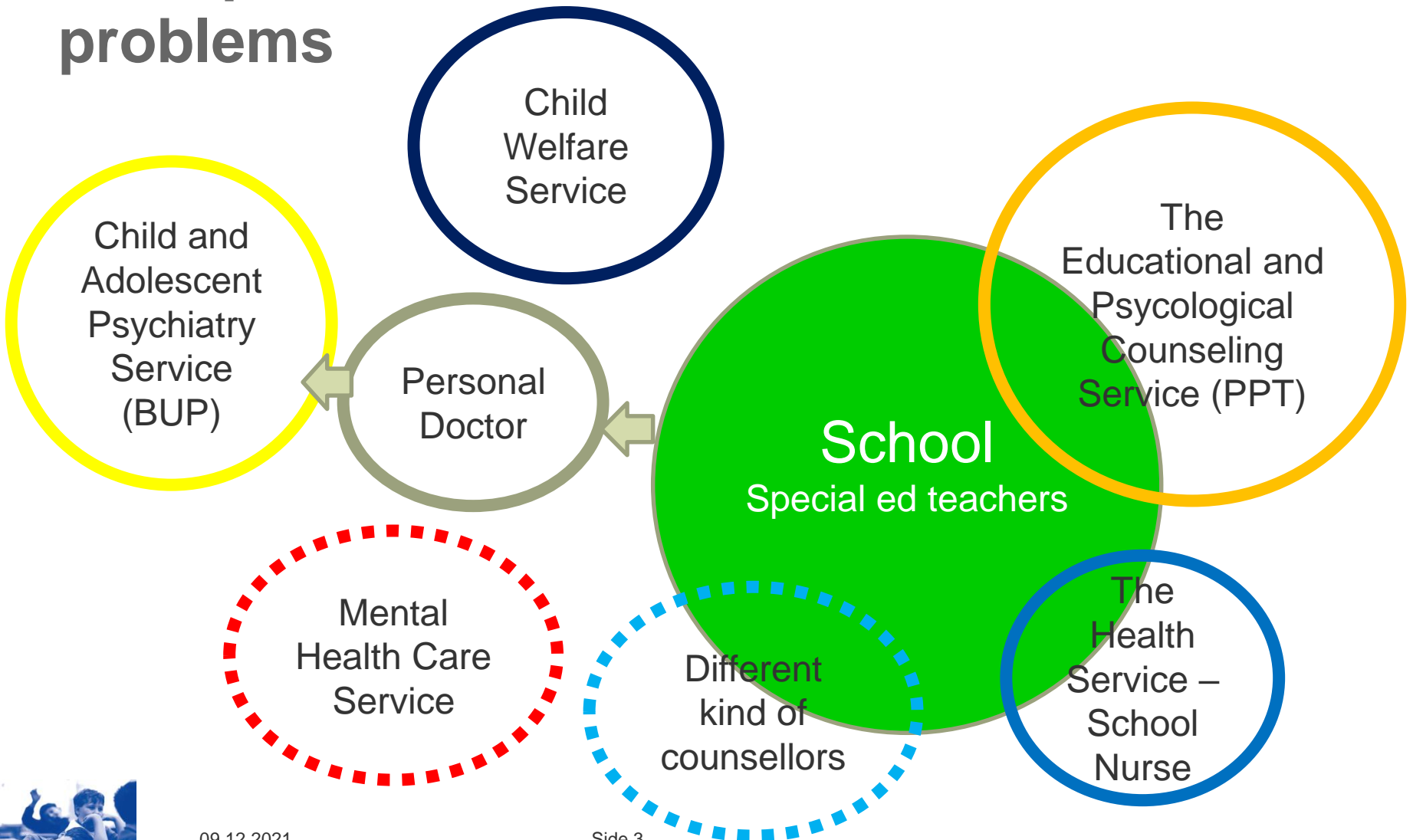
Agenda

- Multi-professional work in Norwegian schools in relation to conduct problems
- Terminology in use for dealing with conduct problems in Norway



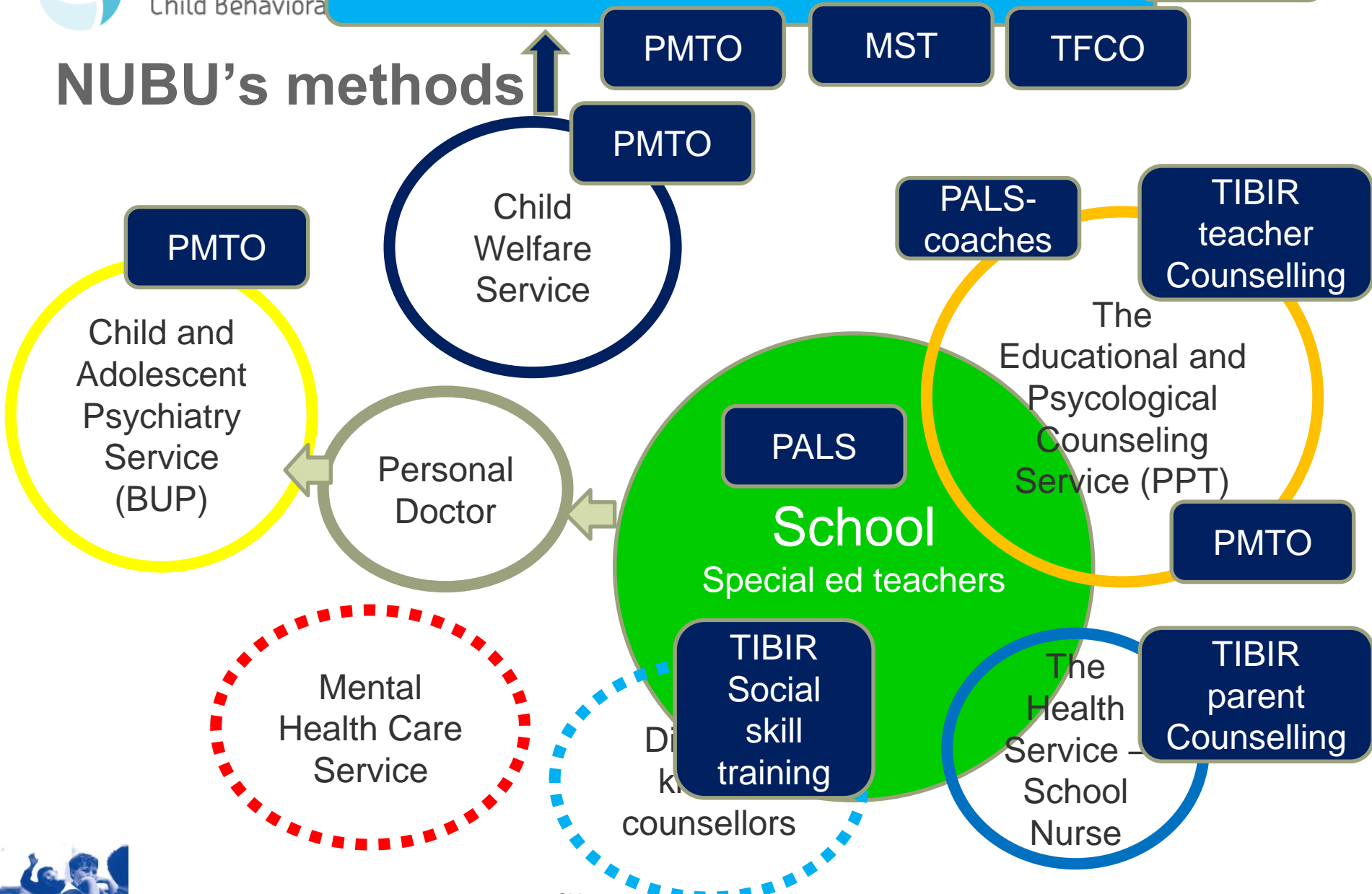


Multi-professional work in relation to conduct problems





NUBU's methods





The Educational and Psychological Counselling Service (PPT)

- A public service agency that provides advice and guidance to schools, municipalities on the establishment of measures and initiatives for children and adolescents with needs.
- The PPT may engage in interdisciplinary collaboration at the local level, for example with the health services or NAV
- PPT determines whether the child is in need of special education and advises on the measures and initiatives that should be provided for the child.
- PPT provides guidance for teachers classroom management, and system matters





The Child Welfare Service

- Primary responsibility to ensure that children and young people whose living situation could pose a threat to their health and development gain the necessary help and care
- Assistance may be given in the form of advice and guidance. Examples of such measures include personal support, advice and guidance and relief efforts in the home.
- if measures taken in the home are not enough to meet the child's needs. For a certain period of time and in consultation with the parents, offer the child a place in a foster home or children's institution, or at a centre for parents and children.





Interdisciplinary meetings within the Schools

- Participants:
- Parents and sometimes children
- Principal and the teacher
- The Educational and Psychological Counselling Service (PPT)
- The Child Welfare Service
- School nurse
- Doctor

Challenge

Who takes responsibility for progression?





Multi-professional work in schools

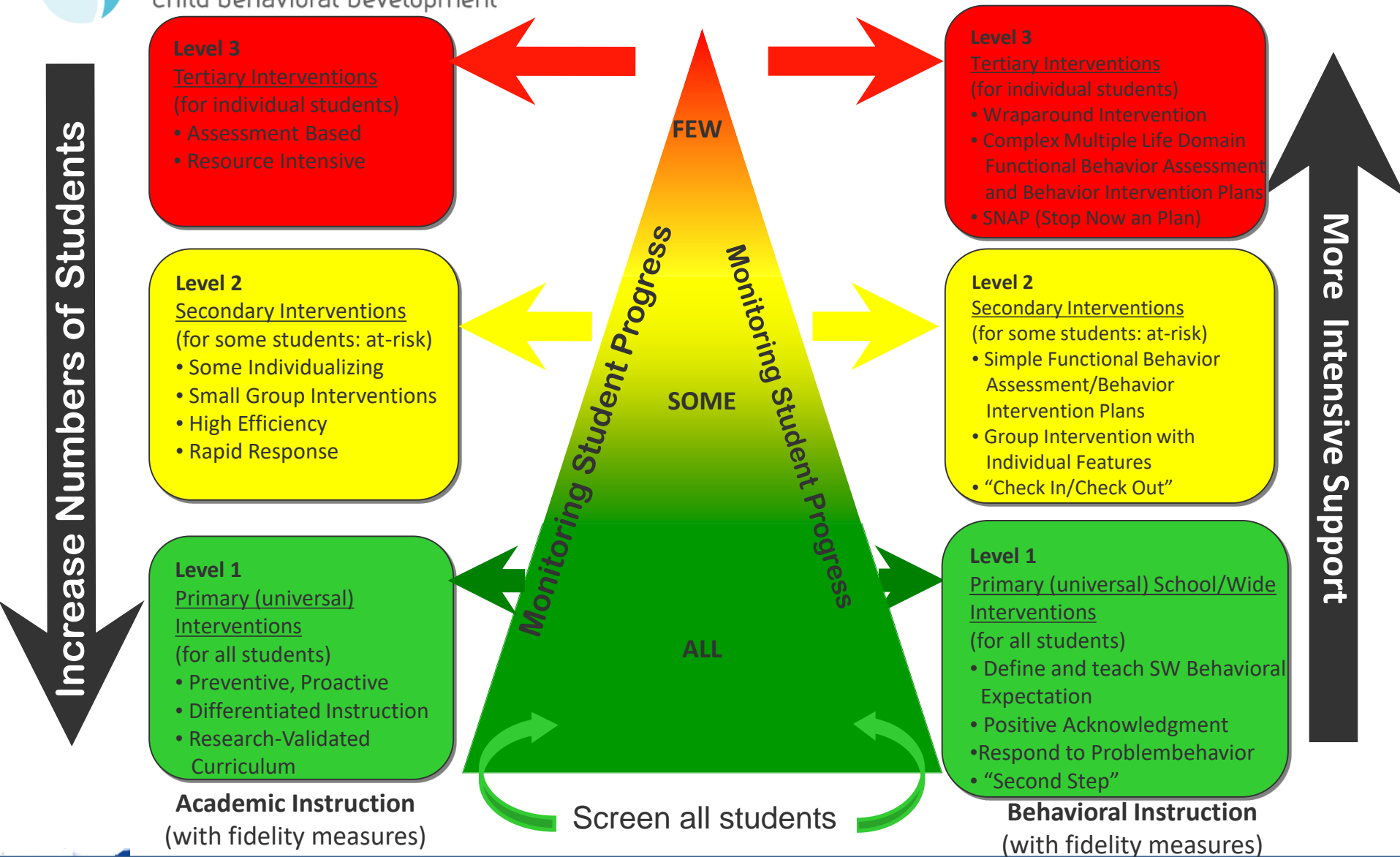
- «Other professions»
 - Different social workers
 - Collaboration inside the building?



Integrated Schoolwide Model for Intervention and Support



The Norwegian Center for
Child Behavioral Development



RTI (Response to Intervention) conceptual system for behavior instruction with general and special education integrated at all three levels



Modul 2

- Targeted and intensive level

BoQ >70% . Self-Assessment Survey >-80%

Functional assessment – support plans

”Check in – Check out”

SNAP





Terminology in use for dealing with conduct problems in Norway

